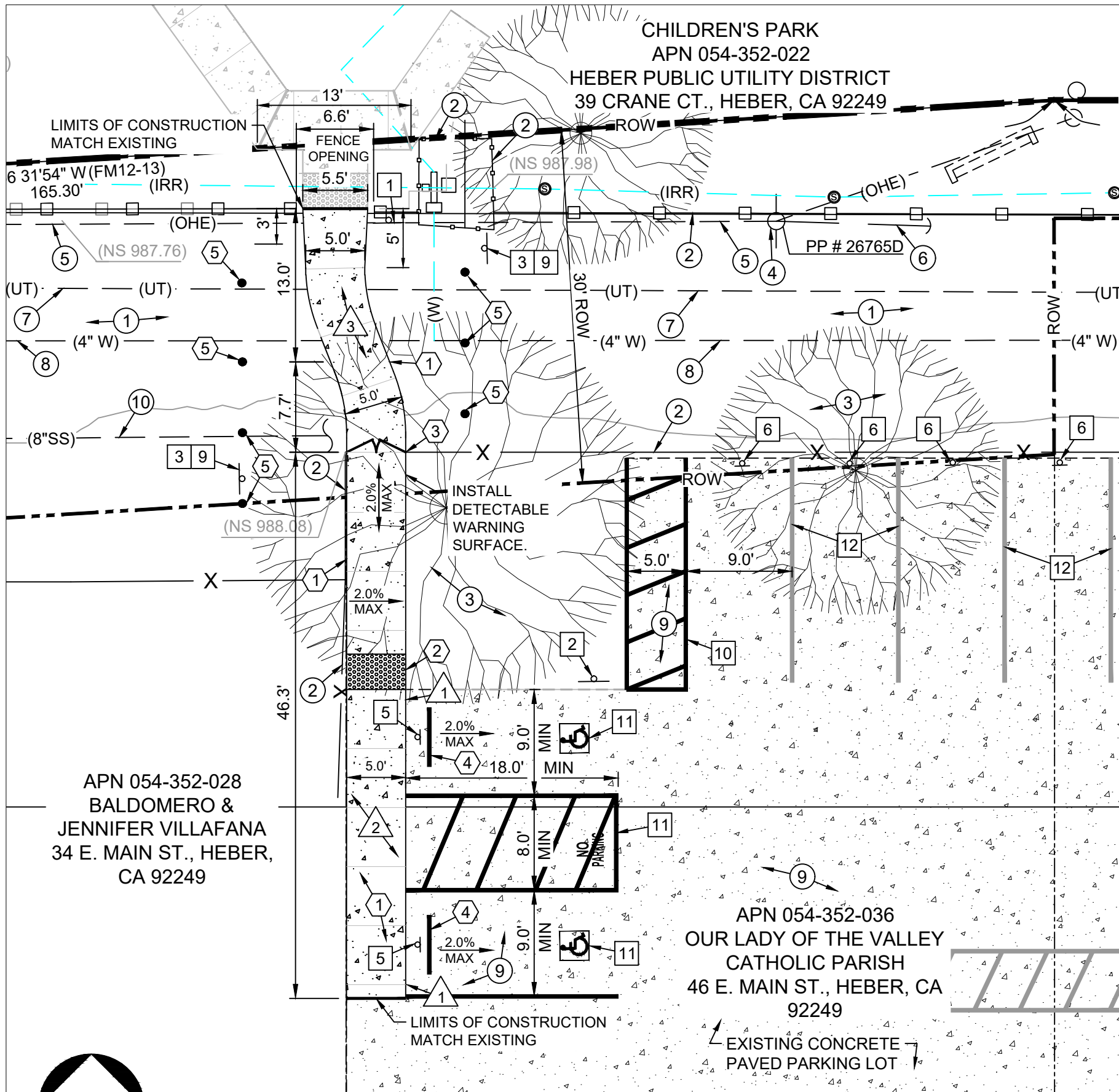
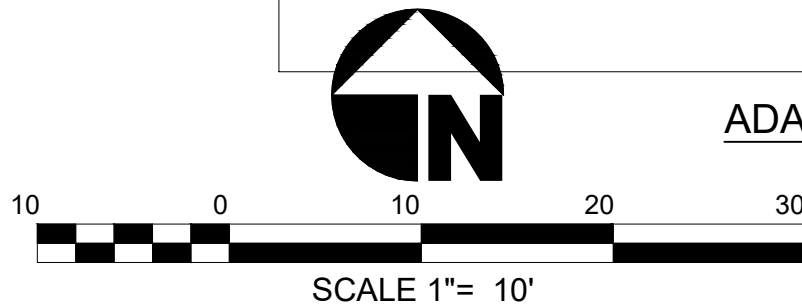


VICINITY MAP



ADA ACCESSIBLE PARKING AND WALKWAY  
SITE IMPROVEMENTS



ADA ACCESSIBLE PARKING AND WALKWAY SIGNAGE PLAN



NOT TO SCALE

The Holt Group, Inc.

ENGINEERING • PLANNING • SURVEYING

EL CENTRO OFFICE  
1601 N. Imperial Ave.  
El Centro, CA 92243  
(760) 337-3883

BLYTHE OFFICE  
201 E. Hobsonway  
Blythe, CA 92225  
(760) 922-4658

NO. REVISIONS:

APPROVED

DATE

DESIGN BY:

FHG

DRAWN BY:

CG, LNM

CHECKED BY:

JGH

PROJECT BENCH MARK:

THE PROJECT BENCHMARK IS A STANDARD DISK STAMPED "V/PN GPS-19 RESET 1994" SET IN AN IMPERIAL IRRIGATION DISTRICT CONCRETE HEADWALL OF A CONCRETE BOX CULVERT. TO REACH THE BENCHMARK, GO 0.50 MILES EAST ON WILLOUGHBY ROAD FROM THE INTERSECTION OF DOGWOOD ROAD AND WILLOUGHBY ROAD TO WARE ROAD; THEN GO 183.50 NORTH ALONG WARE ROAD AND THE STATION TO THE LEFT, WEST 18.50 FEET FROM WARE ROAD CENTERLINE.  
PROJECT ELEVATION: 1000.34' (NAVD 88+1000)



PREPARED UNDER THE DIRECT SUPERVISION OF:

JAMES G. "JACK" HOLT  
04/03/2025  
DATE  
31773  
R.C.E. NO.  
12/31/26  
REG. EXP.

PROJECT TITLE:

HEBER PUBLIC UTILITY DISTRICT  
ADA ACCESS IMPROVEMENT FOR  
CHILDREN'S PARK PROJECT

SHEET CONTENT:

ACCESS IMPROVEMENT PLAN

SHEET

1

OF 2 SHEETS

JOB NO.

744.087E

EXISTING KEYNOTES

- EXISTING NATIVE SURFACE TO REMAIN.
- EXISTING FENCE TO REMAIN.
- EXISTING TREE TO REMAIN.
- EXISTING POWER POLE.
- EXISTING ELECTRICAL LINE.
- EXISTING GUY WIRE TO REMAIN.
- EXISTING UNDERGROUND TELEPHONE LINE TO REMAIN.
- EXISTING 4" ACP WATER PIPELINE TO REMAIN.
- EXISTING CONCRETE PAVED PARKING SURFACE TO REMAIN.
- EXISTING 8" VCP SANITARY SEWER PIPELINE TO REMAIN.

DEMOLITION KEYNOTES

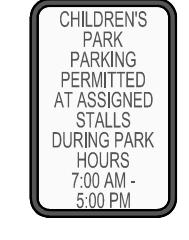

- SAWCUT EXISTING CONCRETE FOR THE FULL DEPTH OF THE CONCRETE.
- REMOVE AND DISPOSE OF EXISTING CONCRETE AND UNDERLYING NATIVE MATERIAL TO SUBBASE DESIGN GRADE.
- REMOVE AND DISPOSE OF EXISTING NATIVE MATERIAL TO SUBBASE DESIGN GRADE AT NEW WALKWAY INSTALLATION AREA.

CONSTRUCTION KEYNOTES

- INSTALL 5-FOOT WIDE P.C.C. WALKING PATH LEADING TO THE PARK ENTRANCE. SEE DETAIL C ON SHEET 2. CONSTRUCT RETAINING CURB AS NEEDED TO MATCH AT THE EDGES OF SIDEWALK.
- INSTALL TRUNCATED DOME PER CALTRANS STANDARD PLAN A88A.
- INSTALL 5-FOOT WIDE DOUBLE SWING GATE PER GATE DETAIL B ON SHEET 2. ADJUST EXISTING FENCE TO ACCOMMODATE THE INSTALLATION OF THE GATE.
- INSTALL CURB STOPS PER CALTRANS STANDARD PLAN A90A.
- INSTALL REMOVABLE BOLLARD PER THE BOLLARD DETAIL A ON SHEET 2.

SIGNAGE AND STRIPING KEYNOTES

- INSTALL ADA ACCESSIBLE PARKING SIGNS PER COUNTY OF IMPERIAL STANDARD DETAIL NO. 510A.
- INSTALL CHURCH VISITORS PARKING SIGNS PER COUNTY OF IMPERIAL STANDARD DETAIL NO. 510A.
- INSTALL PEDESTRIAN CROSSING SIGNS (W11-2) PER COUNTY OF IMPERIAL STANDARD DETAIL NO. 510A.
- INSTALL "AHEAD" SIGN (W16-9P) AT THE LOCATION SHOWN ON THE PLAN.
- INSTALL HANDICAP PARKING ONLY (R-99) AND "VAN ACCESSIBLE" SIGNS (R-99B) PER CALTRANS STANDARD DRAWING A90A AT THE ADA PARKING STALLS.
- INSTALL PARK PARKING PERMITTED SIGN PER COUNTY OF IMPERIAL STANDARD DETAIL NO. 510A AT THE LOCATIONS AS APPROVED BY THE CHURCH ADMINISTRATOR.
- INSTALL PARK PARKING PERMITTED SIGN AT ASSIGNED STALLS PER COUNTY OF IMPERIAL STANDARD DETAIL NO. 510A.
- INSTALL "NO OUTLET" SIGN (W14-2) PER COUNTY OF IMPERIAL STANDARD DETAIL NO. 510A AT THE LOCATIONS SHOWN ON THE PLAN.
- INSTALL DIAGONAL ARROW SIGN (W16-7P) PER COUNTY OF IMPERIAL STANDARD DETAIL NO. 510.
- PAINT WHITE DIAGONAL STRIPING AND STALL LINE.
- RETROFIT EXISTING PARKING STALLS TO BE ADA ACCESSIBLE BY RE-STRIPING, SIGNAGE AND STRIPING PER ADA OFF-STREET PARKING PER CALTRANS STANDARD PLAN A90A.
- REMOVE AND REPAINT WHITE STRIPING LINES FOR THE ASSIGNED CHILDREN'S PARK VISITORS' PARKING STALLS. THE EXACT LOCATIONS OF THE PARKING STALLS TO BE RE-STRIPED ARE TO BE DETERMINED BY HPUD AND OUR LADY OF THE VALLEY CATHOLIC PARISH.

SIGNAGE KEYNOTE NO.		SIGNAGE LEGEND	
1		SIGN SIZE	QUANTITY
		24" X 18"	3
2		SIGN SIZE	QUANTITY
		24" X 18"	3
3	 W11-2	SIGN SIZE	QUANTITY
		30" X 30"	4
4		SIGN SIZE	QUANTITY
		24" X 12"	2
5		SIGN SIZE	QUANTITY
		12" X 18" 12" X 6"	2
6		SIGN SIZE	QUANTITY
		12" X 18"	4
7		SIGN SIZE	QUANTITY
		12" X 18"	2
8	 W14-2	SIGN SIZE	QUANTITY
		30" X 30"	2
9	 W16-7P	SIGN SIZE	QUANTITY
		24" X 12"	2

NOTE: ALL SIGNS SHALL MEET CALIFORNIA MANUAL ON UNIFORM TRAFFIC CONTROL DEVICES (CAMUTCD) STANDARD SPECIFICATIONS.

POTHOLE NOTE:

THE VERTICAL AND HORIZONTAL LOCATION OF EXISTING UNDERGROUND UTILITIES ILLUSTRATED ON THE PLANS ARE APPROXIMATE. AN EFFORT HAS BEEN MADE TO OBTAIN AS-BUILT PLANS IN ORDER TO ACCURATELY ILLUSTRATE THE EXISTING KNOWN UTILITIES DURING THE DESIGN PHASE; HOWEVER, THERE MAY BE ADDITIONAL UNDERGROUND UTILITIES WHICH ARE NOT ILLUSTRATED ON THE PLANS. THE CONTRACTOR SHALL "POTHOLE" ALL UTILITIES LOCATED WITHIN THE PROJECT SITE A MINIMUM OF SEVEN (7) CALENDAR DAYS TO THE COMMENCEMENT OF EXCAVATION ACTIVITIES. THE CONTRACTOR SHALL COORDINATE THE POTHOLING WITH THE UTILITY COMPANIES AND ENGINEER. THE CONTRACTOR SHALL POTHOLE AND EXPOSE THE UTILITIES, DETERMINE THE EXACT HORIZONTAL LOCATION AND DEPTH OF THE UTILITIES. THE EXISTING UTILITY INFORMATION DISCOVERED DURING POTHOLING ACTIVITIES SHALL BE ILLUSTRATED ON THE AS-BUILT PLANS.