
Los Amigos de la Comunidad, Inc



Eric Reyes, Executive Director
Isabel Solis, President





Lithium Valley Specific Plan and Programmatic Environmental Impact Report (PEIR) Community Engagement Opportunities



PAST

Early 2023:
Community Workshop,
Technical Group Feedback, &
Public Review of Baseline
Report

Mid 2023:
Community Workshops,
Technical Group Feedback,
CBO-led Community Meetings,
& Public Review of Land Use
Alternatives

Late 2023:
Board of Supervisors Update;
Community Scoping Meeting,
& Public Review of Notice of
Preparation



FUTURE

Winter 2024:
Technical Groups
Feedback on Specific
Plan components

Spring 2024:
Community Workshop
on Draft Specific Plan,
& Pop-Up Outreach at
Local Community
Event

Summer 2024:
Technical Groups
Feedback, &
Public Review of
Specific Plan Draft
PEIR

Fall 2024:
Public Hearings for
Approval of the
Specific Plan and
Programmatic
Environmental
Impact Report

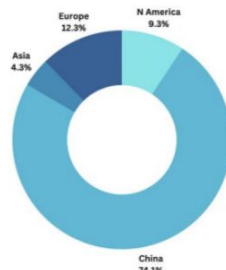
Community feedback and input are always welcome via email: lithiumvalley@co.imperial.ca.us
or phone: (442)265-1736



Global leadership in the United States

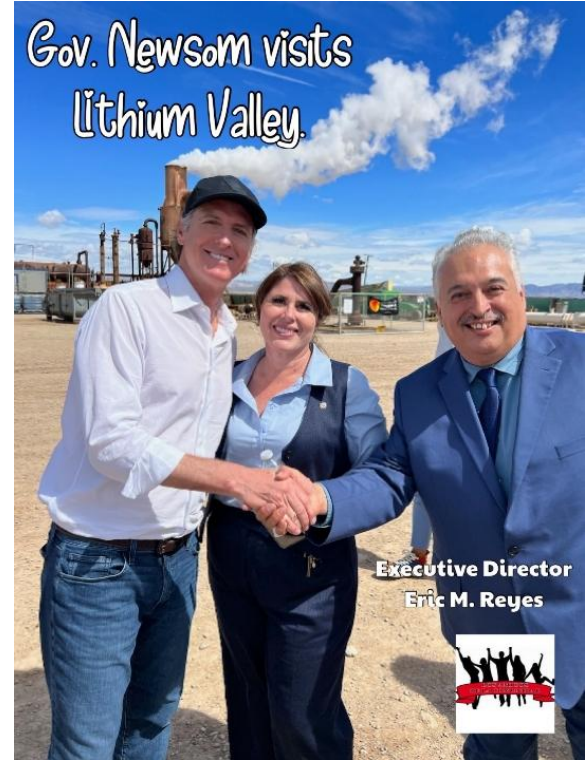
- ✔ Set new benchmarks as the world's leader in sustainable EV materials and battery production.
- ✔ Advance national supply chain security.
- ✔ Build on active bipartisan support.
- ✔ Secure backing from environmental organizations for sustainable minerals recovery and processing.
- ✔ Achieve domestic lithium production capacity to support President Biden's goal of 50% EV sales by 2030.

2026
Forecasted Battery Cell Capacity
by Region



Total: 4,515.4 GWh

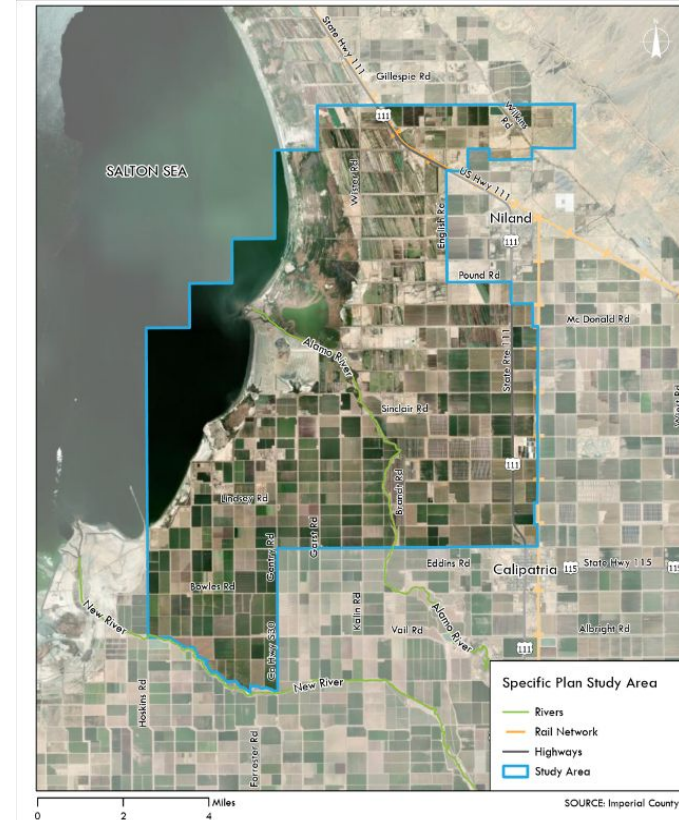
*BMI Lithium Ion Battery Gigafactory Assessment - August 2022



Specific Plan & PEIR Overview

• Where is the Specific Plan?

- Approximately 51,786-acres
- Coincides with the Known Geothermal Resource Area
- New River to the south
- Alamo River running through it
- State Highway 111



3

Li

Lithium

6.941



Electric Bicycles



Laptop



Electric Vehicles



LIBs



Mobile

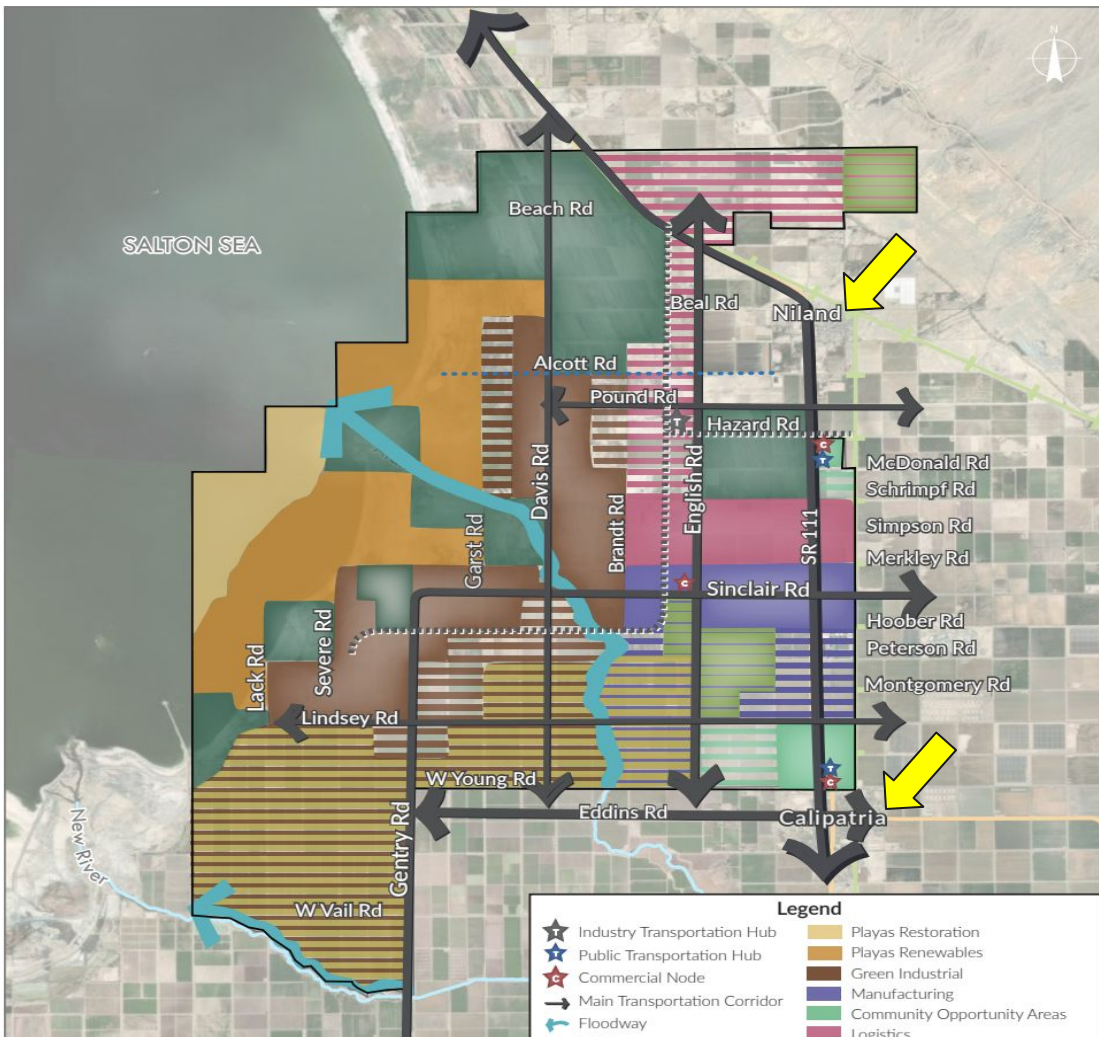


Wearable Device



**Military
Equipment**

Proposed Land Use Plan



Legend

- ★ Industry Transportation Hub
- ★ Public Transportation Hub
- ★ Commercial Node
- Main Transportation Corridor
- ↪ Floodway
- ⋯ Rail Spur
- ⋯ Conceptual Recreation
- ⋯ Easement
- Playas Restoration
- Playas Renewables
- Green Industrial
- Manufacturing
- Community Opportunity Areas
- Logistics
- Conservation
- Interim Solar
- Interim Agriculture

Legend

- ★ Industry Transportation Hub
- ★ Playas Restoration
- ★ Public Transportation Hub
- Playas Renewables
- ★ Commercial Node
- Green Industrial
- Main Transportation Corridor
- Manufacturing
- ↪ Floodway
- Community Opportunity Areas
- ⋯ Rail Spur
- Logistics
- ⋯ Conceptual Recreation
- Conservation
- ⋯ Easement
- Interim Solar
- Interim Agriculture

*Striped areas are designated for subsequent phases

Lithium Extraction in OTHER parts of the World

Open Pit Drilling/Mining



Open Water Pond Leaching



Electric Vehicle California Policy

- On Aug. 25, California regulators **adopted rules** that would ban the sale of new gasoline-powered cars and light trucks by 2035.
- Plug-in hybrid models, which run on gasoline and electricity, may still be sold in 2035 and after, as long as they are capable of running at least 50 miles exclusively on battery power and as long as hybrids are less than 20 percent of an automaker's new vehicles sold in the state.



Secure U.S. Clean Energy Campus

Introducing the world's largest and most sustainable lithium and power production campus where lithium, additional critical minerals, and rare earths will be recovered and processed in one secure U.S. location.

Battery materials production, manufacturing, and recycling facilities can be co-located on site - all powered by firm, clean renewable energy.

One Location - Many Solutions

- Reduce domestic battery supply chain risk
- Increase national clean energy security
- Stabilize EV battery-pack costs
- Support massive carbon emission reductions
- Create thousands of new jobs
- Attract new industry, innovation, and capital investment
- Secure domestic lithium for up to 5 million EVs per year



Capital Investment & Jobs Potential

Capital Investment - \$28 billion

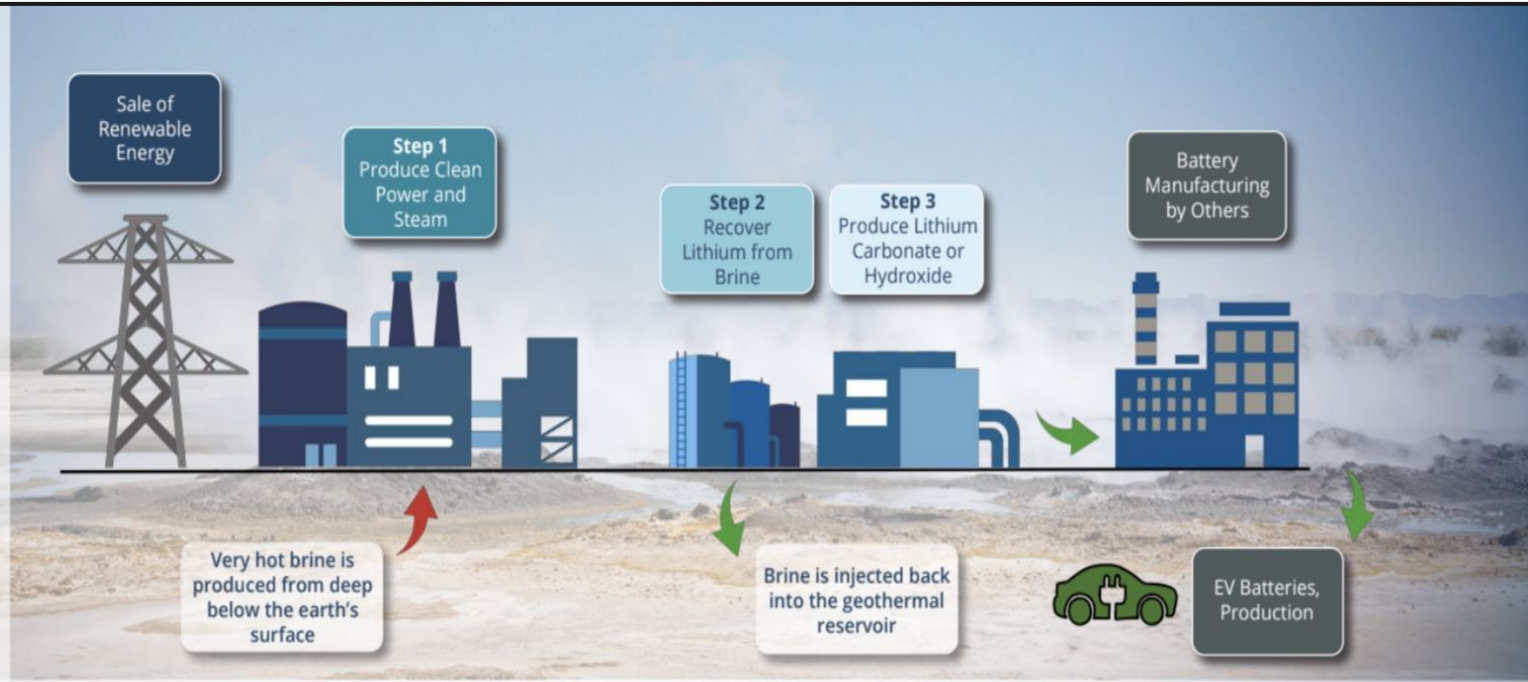
CTR all stages - \$15 billion
Battery Hub 1 - \$9.5 billion
Battery Hub 2 - \$3.5 billion

Jobs - 8,400

CTR all stages - 1,400
Battery Hub 1 - 4,500
Battery Hub 2 - 2,500

Campus Concept Image
Hell's Kitchen - Imperial County, California

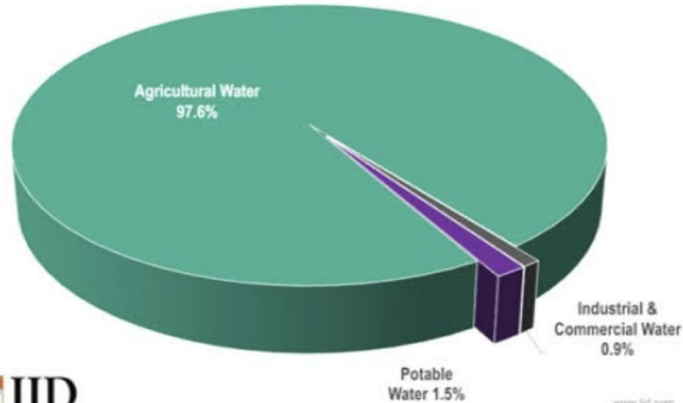
- ✓ Minimal **physical footprint**
- ✓ No **open-pit mining** or **evaporation ponds**
- ✓ No **tailings** or **overseas processing**
- ✓ **Fully integrated** onsite process
- ✓ Powered by **renewable energy** and steam
- ✓ **Near-zero CO₂** emissions



Water and Lithium



2024 Water Apportionment Chart



www.iid.com

13

Currently
Industrial Allocation - 25K Acre Feet

1st Phase Lithium Industry will
need 35K Acre Feet
\$85

Current Water Transfer per year
250K Acre Feet

2.6 M Acre Feet

\$150,000,000



Tax Revenue from Lithium for Imperial County

June 2023 Gov. Newsom signed into law a tiered tax on Lithium - after it was passed by legislature June 2022

- **\$400 per ton** for 20,000 tons or less
- **\$600 per ton** for production between 20,000 to 30,000 tons
- **\$800 per ton** for a production of more than 30,000 tons

Imperial County Tax Revenue Breakdown

80%
County

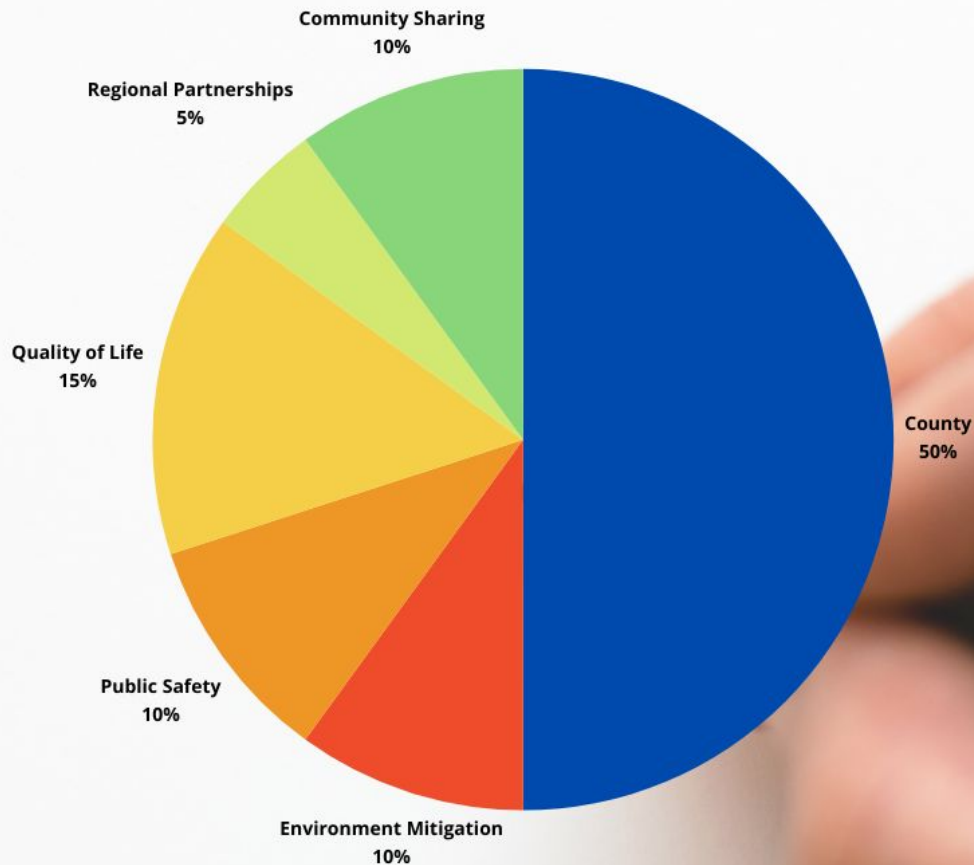


20% Salton
Sea
Restoration

80% Breakdown

30% North End
Communities
Bombay Beach
Niland
Calipatria
Westmorland
Brawley

70% →





Fall 2023	<u>Plant Operator</u>
Fall 2024	Chemical Technician
Fall 2025	Instrumentation Technician

DOE Grant to advance lithium @ IVC \$1.7 M

**\$65 M Recompete Finalist from Economic Dev. Dept (EDA) 1 of 22 finalists*



SAN DIEGO STATE
UNIVERSITY

Imperial Valley

Brawley STEM Hub Campus

Opens Fall 2025

Engineering

Science

***\$80 Million**

Nursing

Groundbreaking Friday, Feb. 9th

SDSU

San Diego State
University

////// **CAMPUS CONSTRUCTION** \\\生\\生\\生\\生\\
BRAWLEY SCIENCE AND ENGINEERING LABORATORIES

START DATE: **JANUARY 2024**

COMPLETION DATE: **JULY 2025**

TOTAL PROJECT BUDGET: **APPROX. \$80M**



GENERAL CONTRACTOR:
Sundt Construction Inc.

ARCHITECT:
AC Martin

CIVIL ENGINEER:
Coffman Engineers

STRUCTURAL:
Coffman Engineers

**MECHANICAL / ELECTRICAL /
PLUMBING ENGINEER:**
Glumac

LANDSCAPE ARCHITECT:
Spurlock



ADMINISTERED BY: **SDSU Planning, Design & Construction**
[FOR PROJECT CONSTRUCTION INFORMATION PLEASE CONTACT]

Erin Rogers | erogers@sdsu.edu | 619.594.3727

LITHIUM VALLEY FINAL BASELINE REPORT & APPENDICES

CLICK HERE





Los Amigos de la Comunidad, Inc

losamigosdelac@gmail.com

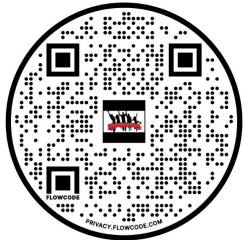
760-332-4072

<https://losamigosdelacomunidad.com/>



Lithium Valley Survey

<https://bit.ly/LithiumValleySurvey>



FOLLOW US ON
facebook

Los Amigos de la Comunidad, Inc



Eric Reyes, Director Ejecutivo
Isabel Solis, Presidenta





Lithium Valley Specific Plan and Programmatic Environmental Impact Report (PEIR) Community Engagement Opportunities

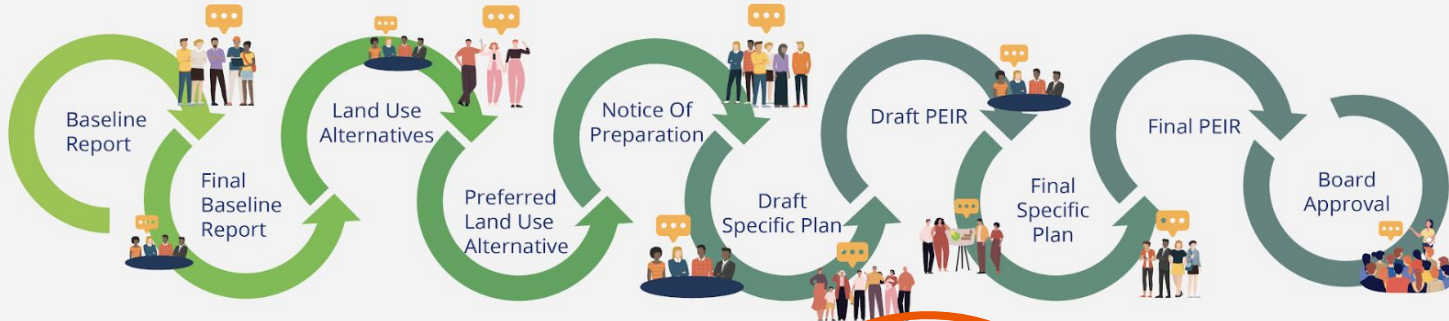


PAST

Early 2023:
Community Workshop,
Technical Group Feedback, &
Public Review of Baseline
Report

Mid 2023:
Community Workshops,
Technical Group Feedback,
CBO-led Community Meetings,
& Public Review of Land Use
Alternatives

Late 2023:
Board of Supervisors Update;
Community Scoping Meeting,
& Public Review of Notice of
Preparation



FUTURE

Winter 2024:
Technical Groups
Feedback on Specific
Plan components

Spring 2024:
Community Workshop
on Draft Specific Plan,
& Pop-Up Outreach at
Local Community
Event

Summer 2024:
Technical Groups
Feedback, &
Public Review of
Specific Plan Draft
PEIR

Fall 2024:
Public Hearings for
Approval of the
Specific Plan and
Programmatic
Environmental
Impact Report

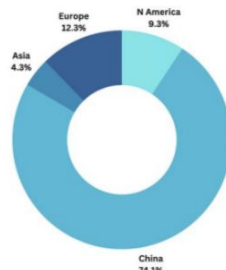
Community feedback and input are always welcome via email: lithiumvalley@co.imperial.ca.us
or phone: (442)265-1736



Global leadership in the United States

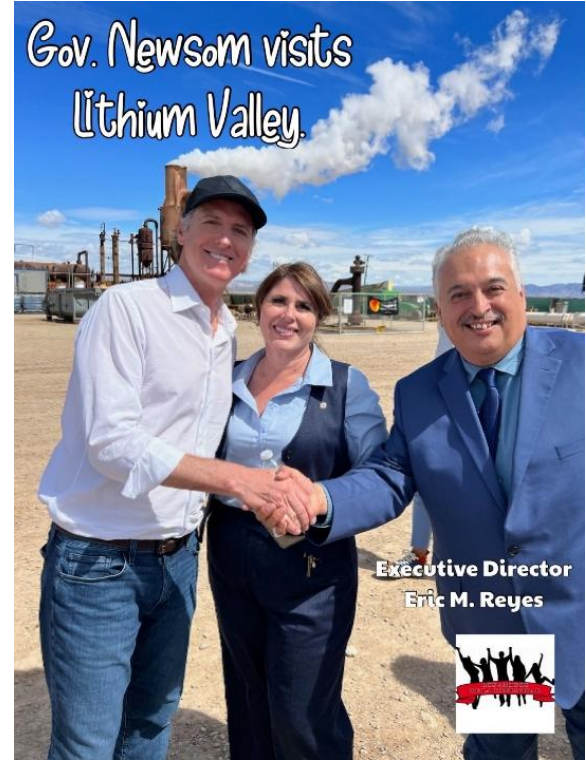
- ✔ Set new benchmarks as the world's leader in sustainable EV materials and battery production.
- ✔ Advance national supply chain security.
- ✔ Build on active bipartisan support.
- ✔ Secure backing from environmental organizations for sustainable minerals recovery and processing.
- ✔ Achieve domestic lithium production capacity to support President Biden's goal of 50% EV sales by 2030.

2026
Forecasted Battery Cell Capacity
by Region



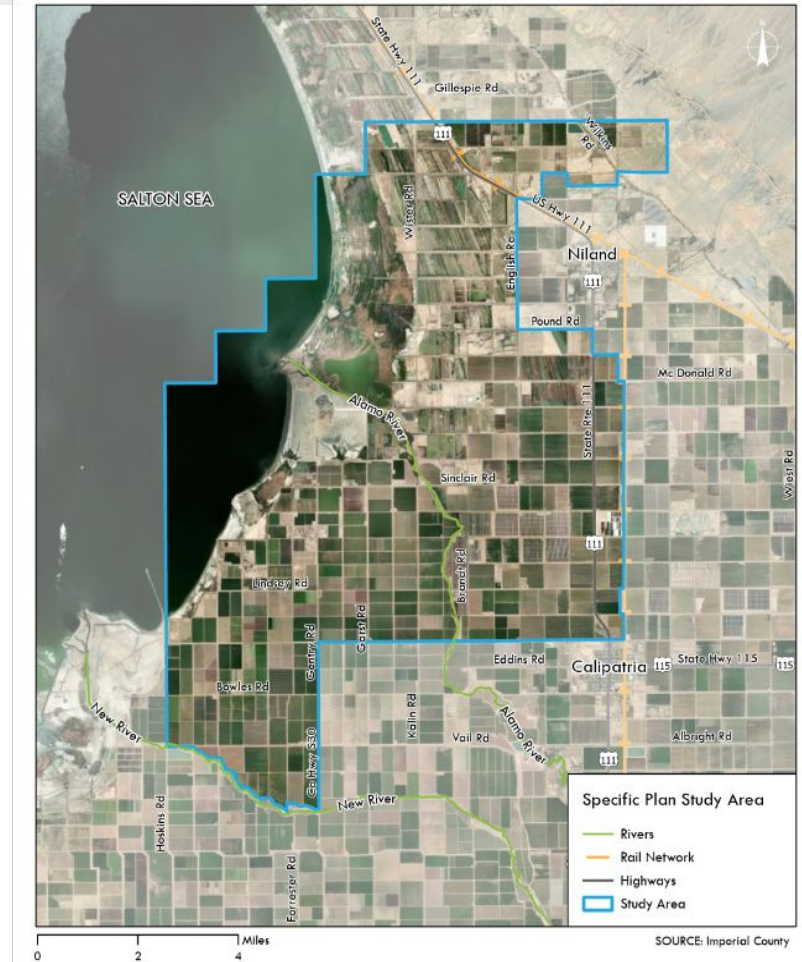
Total: 4,515.4 GWh

*BMI Lithium Ion Battery Gigafactory Assessment - August 2022



Area geotérmica del Salton Sea

- Aproximadamente 51,786 acres
- Coincide con el área de recursos geotérmicos conocidos del Salton Sea



3

Li

Lithium

6.941



Electric Bicycles



Laptop



Electric Vehicles



LIBs



Mobile

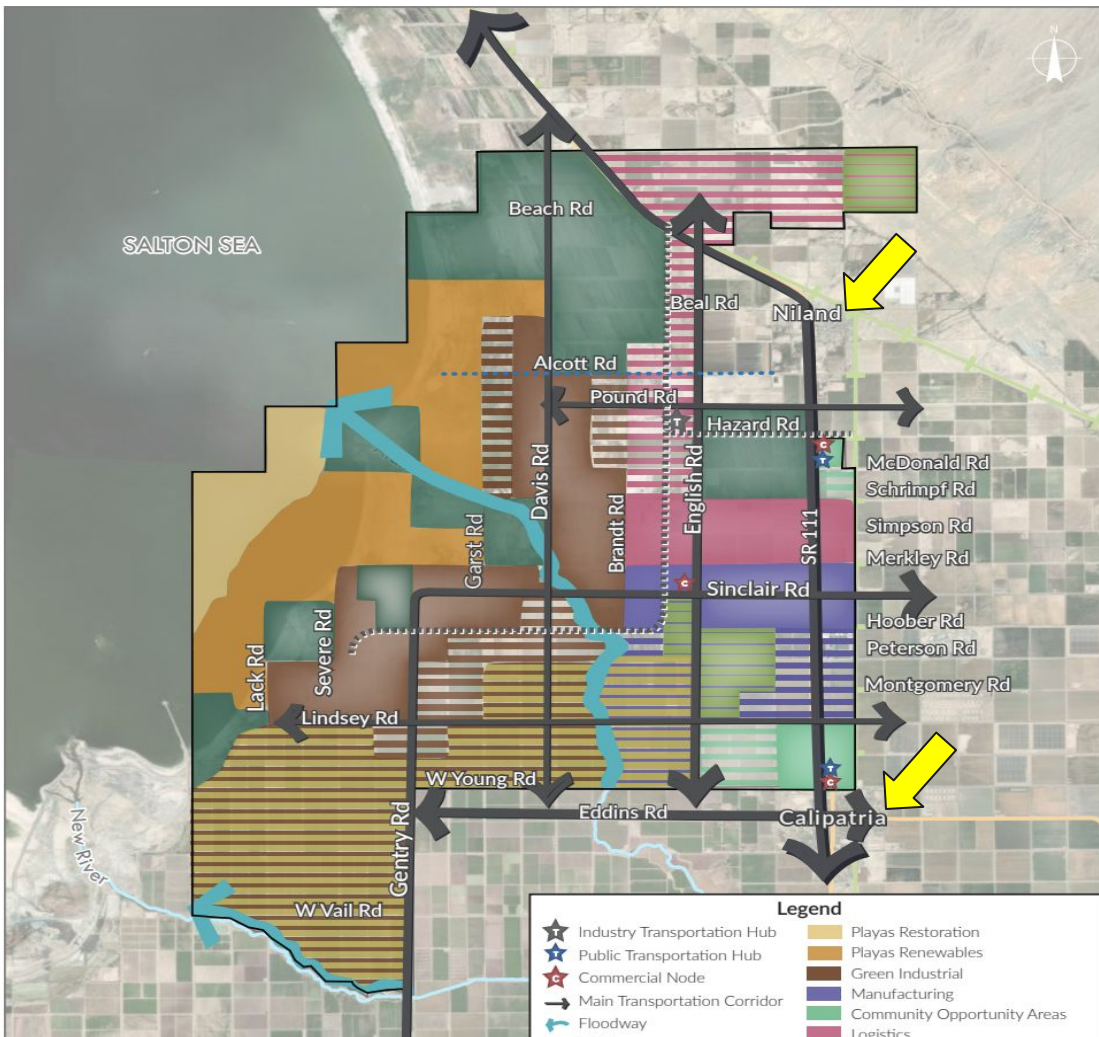


Wearable Device



**Military
Equipment**

Proposed Land Use Plan



Legend

★ Industry Transportation Hub	Plays Restoration
★ Public Transportation Hub	Plays Renewables
★ Commercial Node	Green Industrial
→ Main Transportation Corridor	Manufacturing
↪ Floodway	Community Opportunity Areas
⋯ Rail Spur	Logistics
⋯ Conceptual Recreation	Conservation
⋯ Easement	Interim Solar
	Interim Agriculture

Legend

★ Industry Transportation Hub	Plays Restoration
★ Public Transportation Hub	Plays Renewables
★ Commercial Node	Green Industrial
→ Main Transportation Corridor	Manufacturing
↪ Floodway	Community Opportunity Areas
⋯ Rail Spur	Logistics
⋯ Conceptual Recreation	Conservation
⋯ Easement	Interim Solar
	Interim Agriculture

*Striped areas are designated for subsequent phases

Extracción de Litio en Otros Países



Minería Abierta

Extracción de Litio en
estanques de aguas
abiertas



Electric Vehicle California Policy

- El 25 de agosto, los reguladores de California adoptaron reglas que prohibirían la venta de automóviles y camionetas ligeras nuevos a gasolina para 2035.
- Los modelos híbridos enchufables, que funcionan con gasolina y electricidad, aún podrán venderse en 2035 y después, siempre y cuando sean capaces de recorrer al menos 50 millas exclusivamente con batería y siempre que los híbridos representen menos del 20 por ciento de un vehículos nuevos del fabricante de automóviles vendidos en el estado.



Secure U.S. Clean Energy Campus

Introducing the world's largest and most sustainable lithium and power production campus where lithium, additional critical minerals, and rare earths will be recovered and processed in one secure U.S. location.

Battery materials production, manufacturing, and recycling facilities can be co-located on site - all powered by firm, clean renewable energy.

One Location - Many Solutions

- Reduce domestic battery supply chain risk
- Increase national clean energy security
- Stabilize EV battery-pack costs
- Support massive carbon emission reductions
- Create thousands of new jobs
- Attract new industry, innovation, and capital investment
- Secure domestic lithium for up to 5 million EVs per year



Capital Investment & Jobs Potential

Capital Investment - \$28 billion

CTR all stages - \$15 billion

Battery Hub 1 - \$9.5 billion

Battery Hub 2 - \$3.5 billion

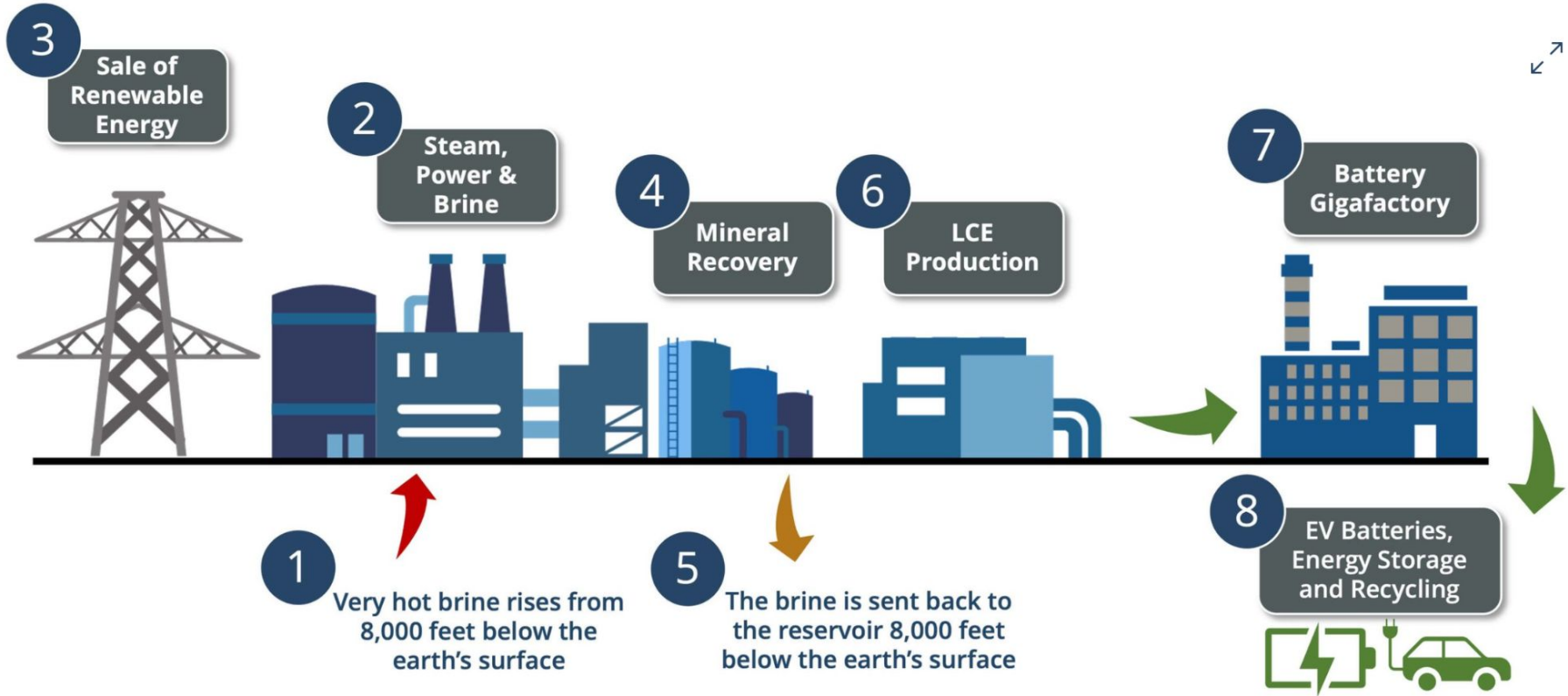
Jobs - 8,400

CTR all stages - 1,400

Battery Hub 1 - 4,500

Battery Hub 2 - 2,500

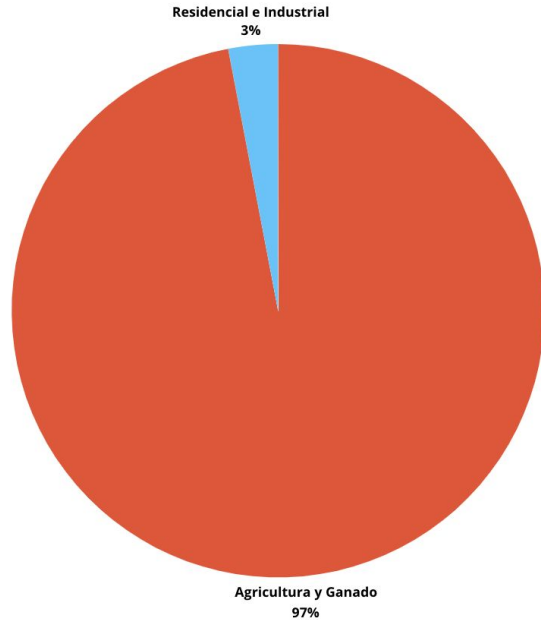
Campus Concept Image
Hell's Kitchen - Imperial County, California



Agua y Litio



Uso de Agua en el Valle Imperial



2.6 Millones de Acre Feet

Actualmente

Uso Industrial designado-
25 Mil -Acre Feet

La primera fase de la industria del
litio necesitará 35 Mil -Acre Feet
\$85

Transferencia de agua actual por año
250 Mil -Acre Feet

\$150,000,000



Ingresos fiscales del litio para el condado de Imperial



Junio de 2023 El gobernador Newsom firmó un impuesto de niveles sobre el litio, después de que fuera aprobado por la legislatura en junio de 2022.

- **\$400 por tonelada** por 20,000 toneladas o menos
- **\$600 por tonelada** por 20,000 to 30,000 toneladas
- **\$800 por tonelada** por más de 30,000 toneladas

80%
Condado



20%
Restauracion
de Salton Sea

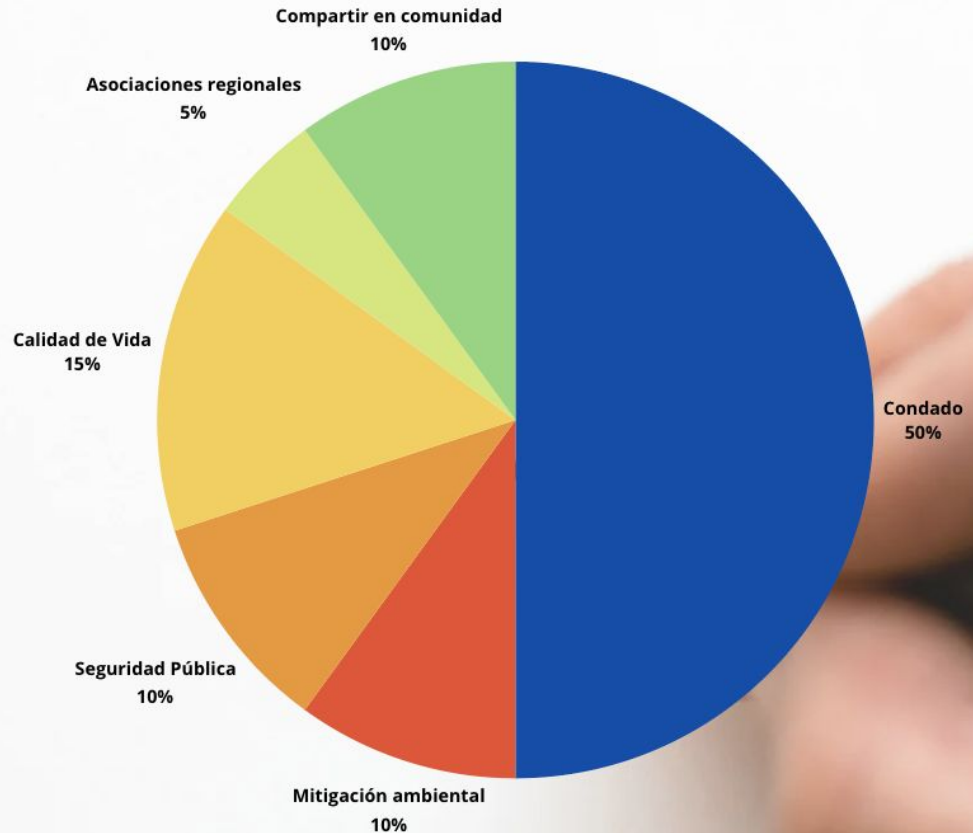
80% Breakdown

30% **Comunidades
del extremo norte**

- Bombay Beach
- Niland
- Calipatria
- Westmorland
- Brawley

70% →

Ingresos fiscales del Condado de Imperial





Otoño 2023	<u>Plant Operator</u>
Otoño 2024	Chemical Technician 2 de Mayo - Prensa
Otoño 2025	Instrumentation Technician

DOE Grant - avanzar en estudios del Litio @ IVC \$1.7 M

*\$65 M Recompete Finalist from Economic Dev. Dept (EDA) 1 of 22 finalists



SAN DIEGO STATE
UNIVERSITY

Imperial Valley

Plantel STEM de Brawley Abre en otoño del 2025

Ingeniería
Ciencia
Enfermería

*\$80 Milliones

Groundbreaking Friday, Feb. 9th

SDSU

San Diego State
University

////// **CAMPUS CONSTRUCTION** \\\生\\生\\生\\生\\
BRAWLEY SCIENCE AND ENGINEERING LABORATORIES

START DATE: **JANUARY 2024**

COMPLETION DATE: **JULY 2025**

TOTAL PROJECT BUDGET: **APPROX. \$80M**



GENERAL CONTRACTOR:
Sundt Construction Inc.

ARCHITECT:
AC Martin

CIVIL ENGINEER:
Coffman Engineers

STRUCTURAL:
Coffman Engineers

MECHANICAL / ELECTRICAL /
PLUMBING ENGINEER:
Glumac

LANDSCAPE ARCHITECT:
Spurlock

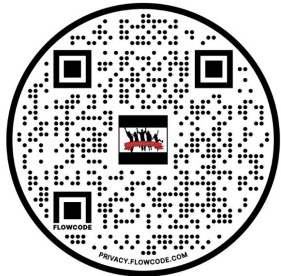


ADMINISTERED BY: **SDSU Planning, Design & Construction**
[FOR PROJECT CONSTRUCTION INFORMATION PLEASE CONTACT]

Erin Rogers | erogers@sdsu.edu | 619.594.3727



Los Amigos de la Comunidad, Inc
losamigosdelac@gmail.com
760-332-4072
<https://losamigosdelacomunidad.com/>



 Síguenos en
Facebook



Encuesta del valle del litio
<https://bit.ly/LithiumValleySurvey>